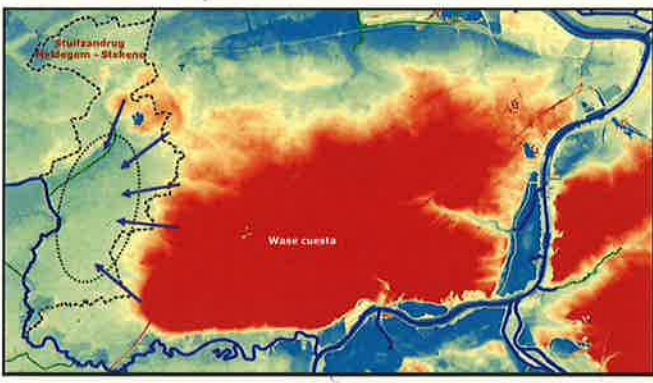
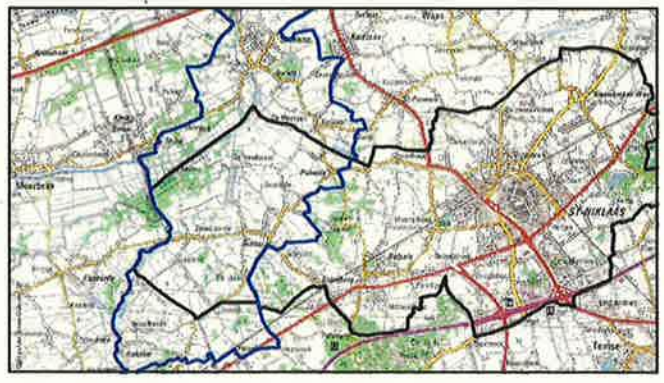
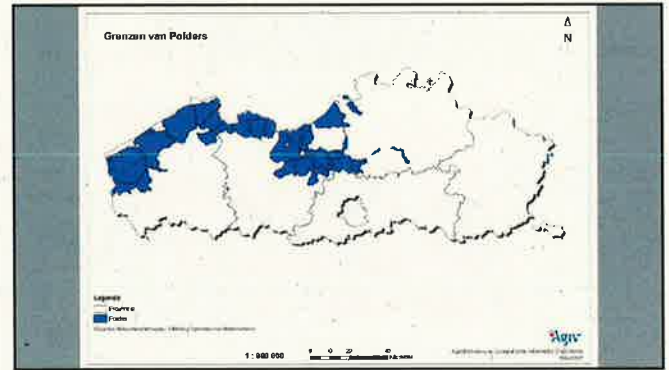




# HET WATERBEHEER IN DE POLDER SINAAI-DAKNAM







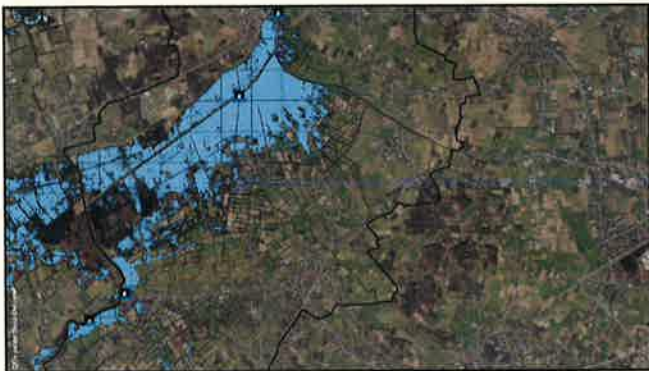
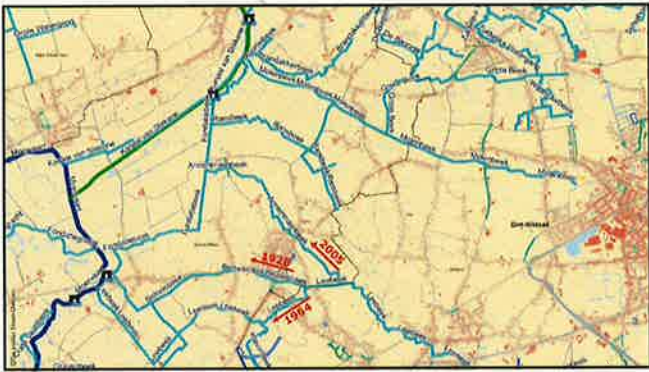
 **EEN 2-LEDIG WATERSYSTEEM**

Vreemd water: indijken en gravitair afvoeren  
 Eigen water: onder maaiveld houden en verpompen

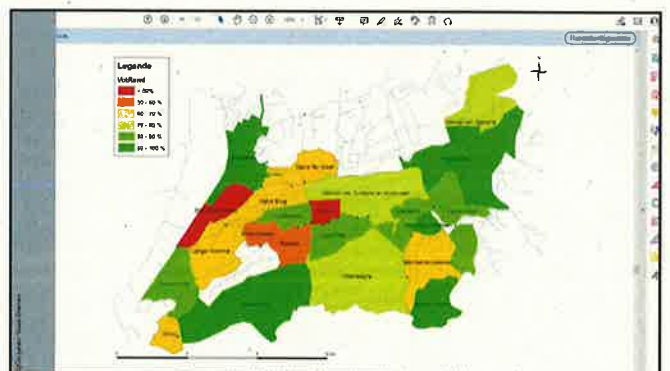
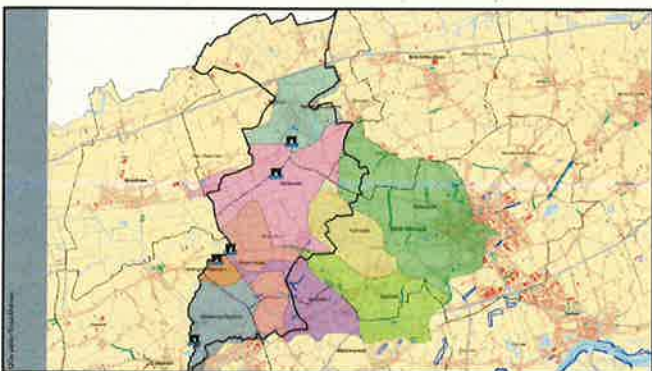








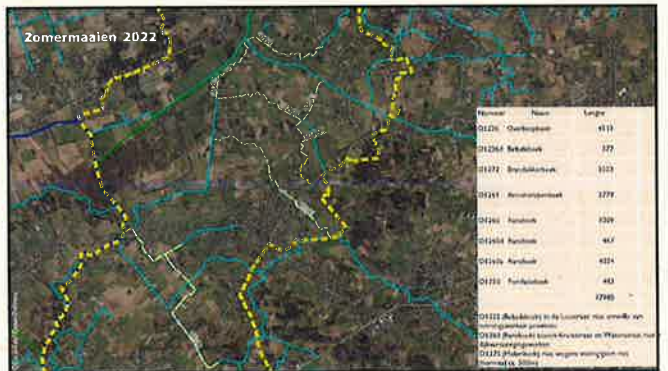
PROJECT GRAVENBEEK  
LEESTRAAT













**SLIBRUIMINGSWERKEN**



**BIJZONDERE WERKEN**





Bedankt voor de aandacht!  
Vragen?